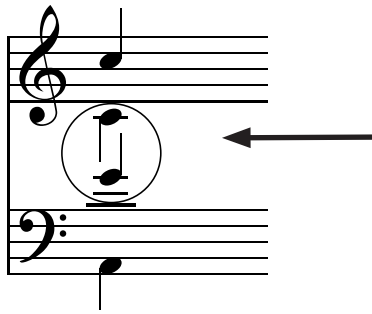


Other 4-Part Harmony Rules (When Will It Stop?)

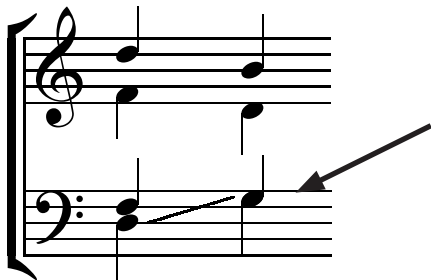
The alto and tenor parts must not 'cross-over' e.g.



The alto is singing lower than the tenor! Usually it works to simply switch these around, but it MIGHT affect other things in your harmony example, so be careful.

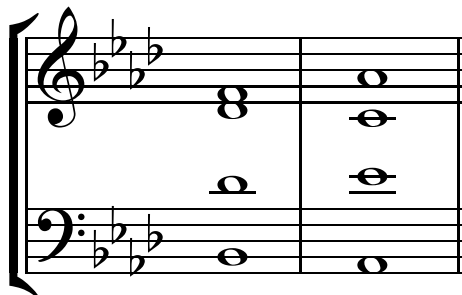
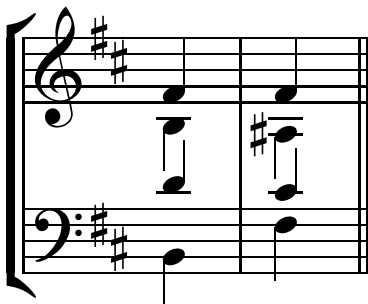
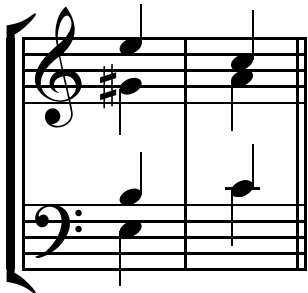


Voices must also not 'overlap', e.g.



The bass has overlapped by singing a higher note than the tenor was singing the note before.

See if you can pick the mistakes in these - some have voice-crossing, others voice-overlapping... some have both!



Now find at least 10 mistakes in the following harmony example (Hint: There are ALL kinds of errors, not just the ones we've talked about on this page!)

