

TEST PAPER

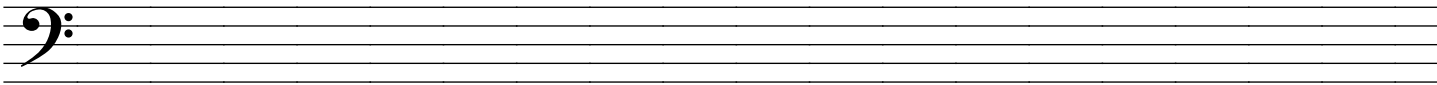
SECOND GRADE MUSICIANSHIP

Question 1	KEYS AND SCALES	Total Marks 19
-------------------	------------------------	-----------------------

A. Write the scale of F harmonic minor



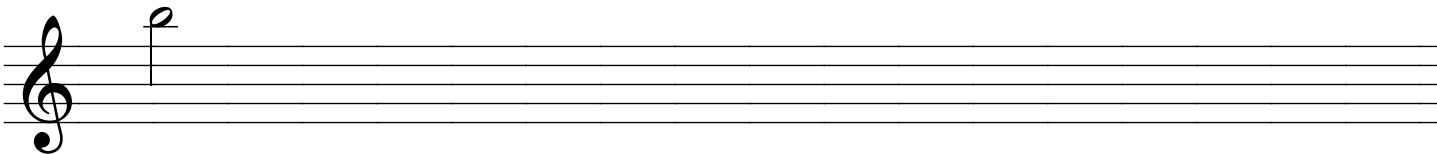
- write the key signature
- write two octaves going up
- use crotchets
- mark the tones with a slur
- complete the scale with a double bar line



B. Write the major scale starting on the given note



- use accidentals
- use minims
- for one octave going down then one octave going up
- mark the semitones with a slur
- complete the scale with a double bar line



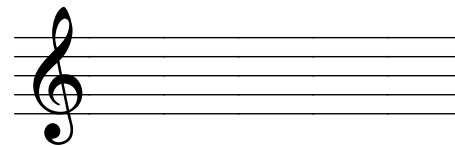
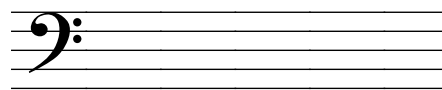
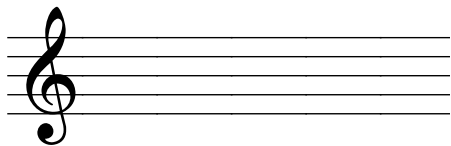
C. Write the following notes with key signatures



(i)

(ii)

(iii)



C minor
leading note

B major
submediant

E major
dominant

Question 2

INTERVALS

Total Marks 8

A. Name these intervals by number and quality

4



.....

B. Write these intervals above the given notes

4



Major 7th

Perfect 4th

Perfect 5th

Minor 3rd

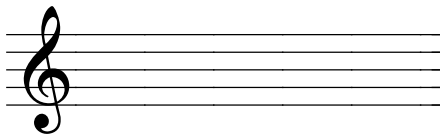
Question 3

CHORDS

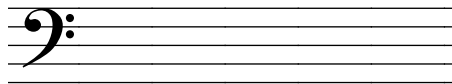
Total Marks 12

A. Write the following triads with key signatures

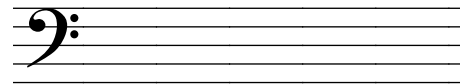
6



B minor dominant (V)



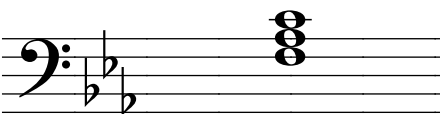
F minor subdominant (IV)



E major tonic (I)

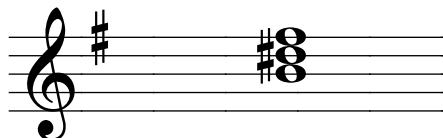
B. Name the following keys and triads as either the tonic (I), subdominant (IV) or dominant (V).

6



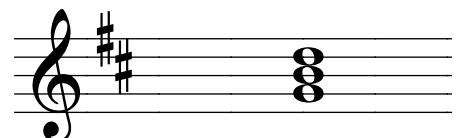
Key

Triad



Key

Triad



Key

Triad

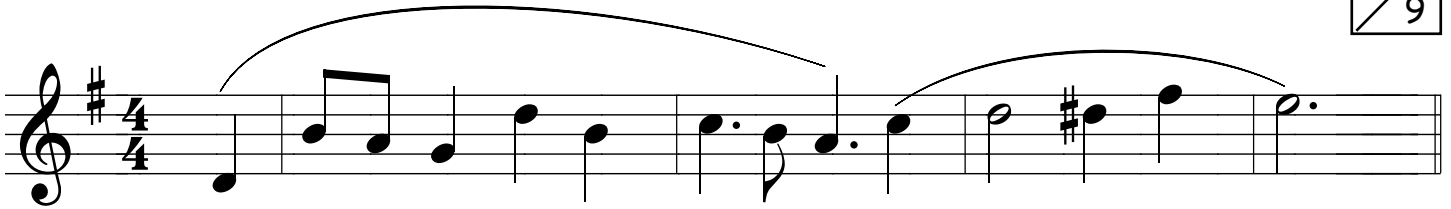
A. Write the scale degree numbers (or tonic sol-fa names) under the last six notes of this melody.



.....

B. Transpose the above melody up a tone into E major





B. Study the above melody and then answer the following questions:

- (i) What is the opening key?
- (ii) What is the key of the modulation?
- (iii) What is the relationship of the new key to the original key?
- (iv) Fix the error in rhythm in the second bar.
- (v) Add a sign to pause on the last note of the first phrase.
- (vi) Add a sign to play the last note more strongly.
- (vii) Add an Italian direction to become gradually faster in the third bar.
- (viii) Add a sign to indicate the melody should begin very softly.
- (ix) Add a sign which would indicate the melody is to be played twice.