

TEST PAPER (Ready for marking!) FIFTH GRADE THEORY

Question 1

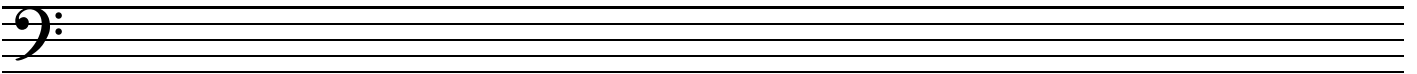
KEYS AND SCALES

Total Marks 10

A. Write the scale of A sharp melodic minor

5

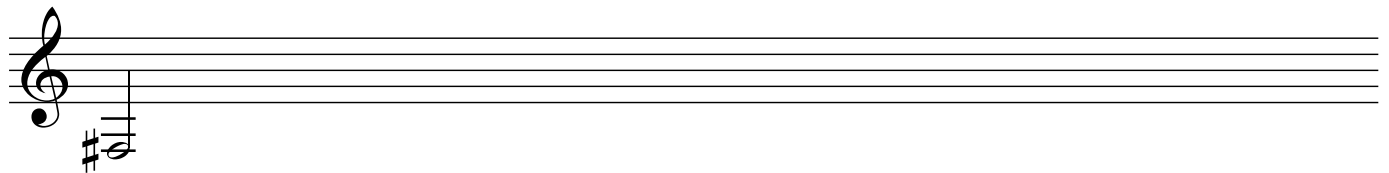
- Use a key signature
- Use crotchets
- Write one octave going down and then up again
- Mark each semitone with a slur
- Complete the scale with a double bar line



B. Write the major scale that starts on the given note

5

- Use accidentals
- Use minims
- Write two octaves going up
- Mark the tones with slurs
- Complete the scale with a double bar line



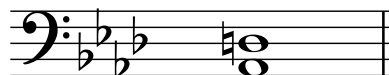
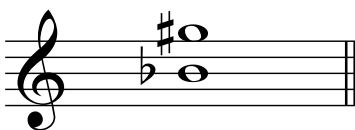
Question 2

INTERVALS

Total Marks 12

A. Name these intervals by number and quality

3



.....

.....

.....

B. Write these intervals below the given notes



minor 7th

perfect 5th

diminished 4th

minor 3rd

major 6th

C. Write the inversions of these intervals and name the inversions



.....

.....

Question 3	MODULATION	Total Marks 4
------------	------------	---------------

Each of these melodies modulates and ends in the new key. For each melody, name the new key and state its relationship to the original key.

Key of modulation: _____ Relationship to original key: _____

Key of modulation: _____ Relationship to original key: _____

A. Harmonise the following melody in four-part vocal style. Include some unaccented passing notes and auxiliary notes.

16

Lento

B. In four-part vocal style, harmonise the notes under each of the four brackets with a cadence and an appropriate approach chord. The passage includes modulation to related keys. Show one example of each of the four principle cadences.

16

Moderato

Answer only ONE part of this question.

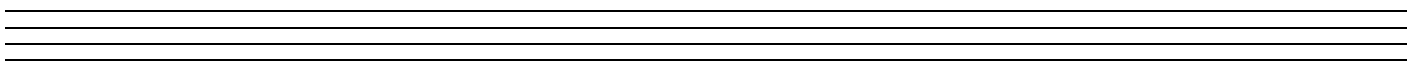
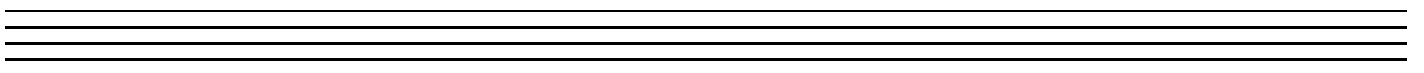
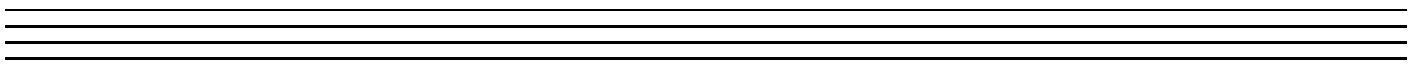
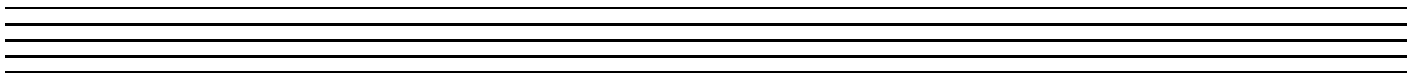
EITHER: Write a melody in F major to the following stanza of poetry

- Write the words clearly under the notes
- Use hyphens for words with more than one syllable
- Mark the phrasing
- Modulation is optional

She sits beside the tinted tide,
That's reddened by the tortured sand;
And thro' the East, to ocean wide,
A vessel sails from light of land.

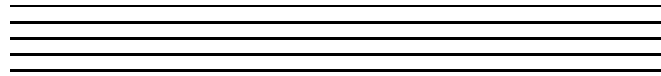
OR: Continue this given opening to make a balanced eight-bar melody.

- Mark the phrasing
- Modulation is optional



A. Briefly describe the flute. Mention its shape, construction, embouchure and tonal qualities. Write the range using an appropriate clef.

6



.....

.....

.....

.....

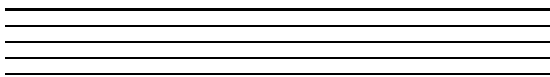
.....

.....

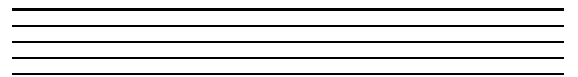
.....

B. Write the following concert pitch phrase for clarinets in A and B flat.

6

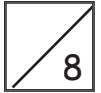


Clarinet in A



Clarinet in B flat

A. What is meant by 'Recitative and Aria' . Refer to examples by Handel or Mozart in your answer.



.....

.....

.....

.....

.....

.....

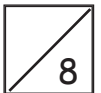
.....

.....

.....

.....

B. Describe in detail the possibilities of a piece written as an 'Air with Variations'. Name at least two examples and their composers.



.....

.....

.....

.....

.....

.....

.....

.....

.....

.....