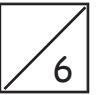
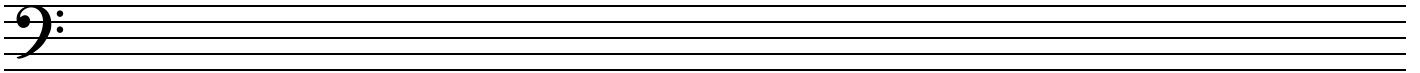




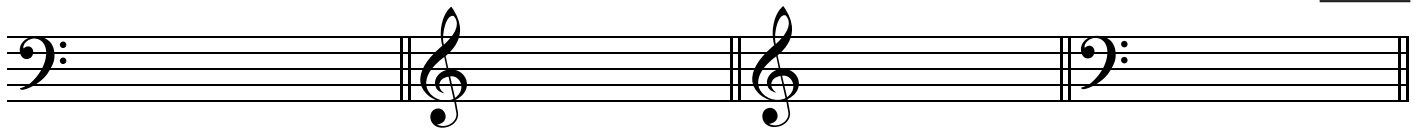
A. Write the minor scale with the key signature of four sharps



- Use a key signature
- Use minims
- Mark any intervals larger than a tone
- Write one octave going down and then up again
- Complete the scale with a double bar line



B. Write the following notes with key signatures



F minor  
leading note

G flat major  
dominant

F sharp minor  
supertonic

B major  
submediant

C. For each of these modulating melodies, name:



- The key in which it ends
- The relationship of that key to the opening key



New key: \_\_\_\_\_

Relationship to the original key: \_\_\_\_\_

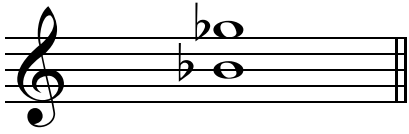


New key: \_\_\_\_\_

Relationship to the original key: \_\_\_\_\_

A. Name these intervals by number and quality

3



.....



.....



.....

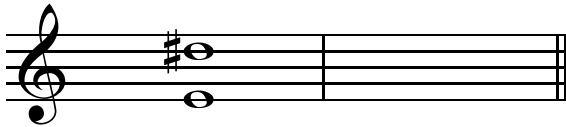
B. Write these intervals above the given notes

5

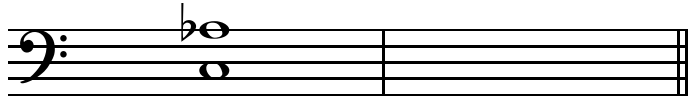
minor 7th      perfect 5th      diminished 4th      minor 3rd      major 6th

C. Write the inversions of these intervals and name the inversions

4

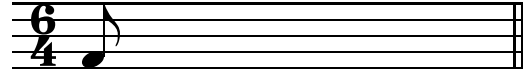
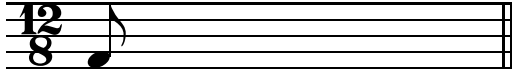


.....



.....

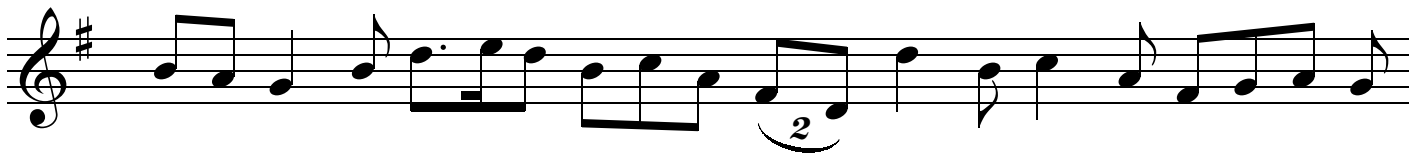
A. Complete the following bars with a rest or rests:



B. Insert the correct time signature to these bars



C. Add a time signature and the missing bar lines to this four bar melody

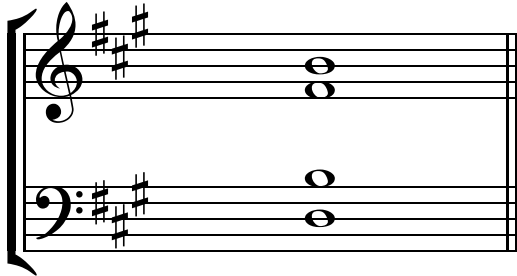


D. Name this rhythmic device



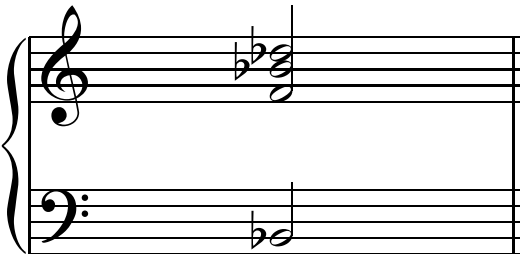
.....

A. Name the key of these subdominant chords and state the position as either root position or first inversion:



Key: \_\_\_\_\_

Position: \_\_\_\_\_

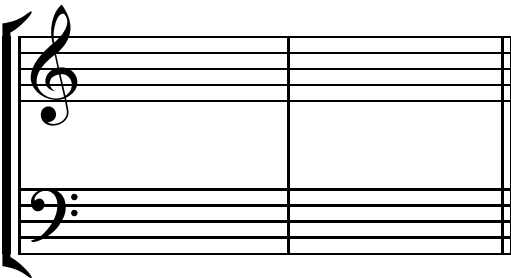


Key: \_\_\_\_\_

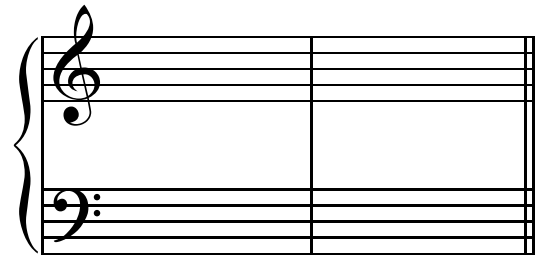
Position: \_\_\_\_\_



B. Write these cadences with key signatures



C sharp minor  
imperfect cadence  
four-part vocal style



B flat major  
plagal cadence  
pianoforte style

C. Harmonise the following melody in four-part vocal style.  
Use root position and first inversion chords.

12

Musical notation for a melody in 3/4 time, key of B-flat major. The melody is written on a single staff with a treble clef. It consists of two phrases, each marked with a slur. The first phrase has six measures, and the second phrase has six measures. The notes are: G4, A4, Bb4, C5, Bb4, A4, G4 (first phrase); G4, A4, Bb4, C5, Bb4, A4, G4 (second phrase). The bass staff is empty.

Question 6

FOLK SONG and TRANSPOSITION

Total Marks 15

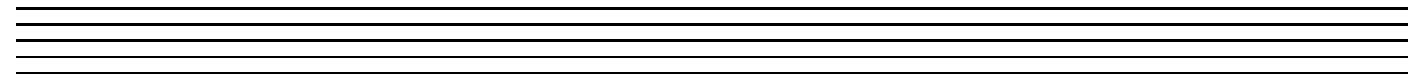
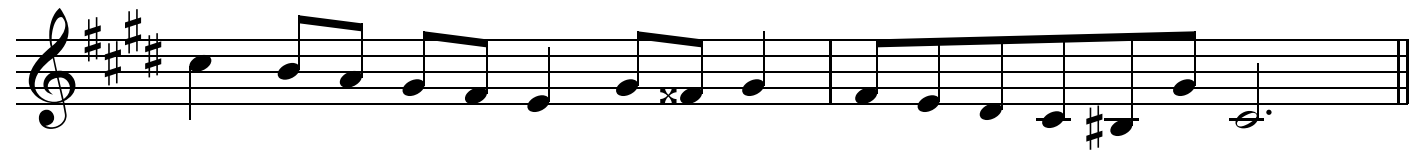
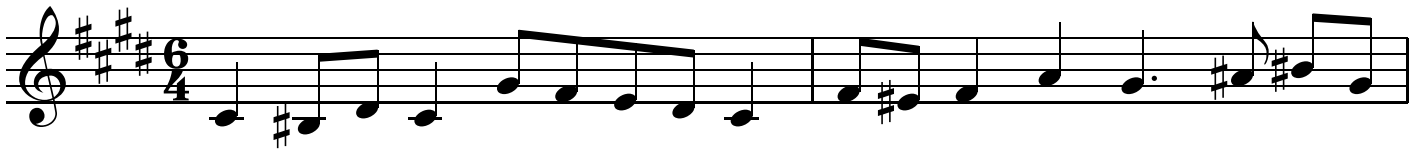
A. Write the folk song 'Polly Oliver'. Do not write the words. Mark the phrasing.

7

Five sets of empty musical staves for writing the folk song 'Polly Oliver'. Each set consists of a single staff with a treble clef and a 3/4 time signature.

B. Transpose this melody down into B flat minor

8



Question 7	TERMS and GENERAL KNOWLEDGE	Total Marks 19	
------------	-----------------------------	----------------	--

A. Give the English meaning of the following terms

6

- i) *tempo commodo* .....
- ii) *calando* .....
- iii) *sul ponticello* .....
- iv) *largamente* .....
- v) *dolente* .....
- vi) *l'istesso tempo* .....

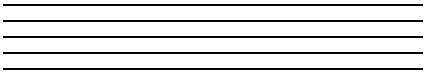
B. Briefly describe the Gavotte

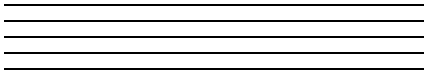


.....  
.....  
.....  
.....

C. Write the open string tunings of the following instruments using appropriate clefs



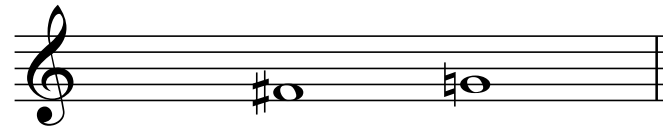
i) cello 

ii) viola 

D. i) Is this semitone diatonic or chromatic?



.....



ii) Is this phrase diatonic or chromatic?

.....



iii) Name these ornaments



.....



.....

E. i) Explain the meaning of 'counterpoint'



.....

ii) Define  $\frac{9}{8}$

.....